

- LEGEND:**
- WATER QUALITY MONITORING STATIONS
- COOLING WATER INTAKES**
- D1 HONG KONG CONVENTION AND EXHIBITION CENTRE EXTENSION
 - D2 TELECOM HONG KONG ACADEMY FOR PERFORMING ARTS / SALT ON CENTRE
 - D3 HONG KONG CONVENTION AND EXHIBITION CENTRE PHASE 1
 - D4 WAN CHAI TOWER AND GREAT EXHIBITION CENTRE
 - D5 SUN HANG KAI CENTRE
 - D6 PROPOSED EXHIBITION STATION / WORLD TRADE CENTRE
 - D7 WINDZER HOUSE
 - D8 CITY GREEN
 - D9 PREVIENT CENTRE
 - D10 PROPOSED HERFA EXTENSION
 - D11 SUN HANG KAI CENTRE (REPROVISION)
 - D12 WINDZER HOUSE (TEMPORARY REPROVISION)
- MSD SALT WATER INTAKE**
- W521 WAN CHAI
 - W401 WAN CHAI (REPROVISION)
 - W501 GEMUNION ISLAND
 - W525 TAI HAN
 - W5210 CHA KWO LING
 - W5215 SAI WAN HO
 - W5217 SCARRY BAY
 - W5219 SHEUNG WAN
 - W5220 KENNEDY TOWN

DESIGNATED PROJECTS (DP)

DP1	CENTRAL WAN CHAI BYPASS (CWB) INCLUDING ITS ROAD TUNNEL AND SLIP ROADS
DP2	ROAD P2 AND OTHER ROADS (PRIMARY / DISTRICT DISTRIBUTOR ROADS)
DP3	PERMANENT AND TEMPORARY REDUPLICATION WORKS INCLUDING ASSOCIATED DREDGING WORKS IN WAN CHAI DEVELOPMENT PHASE 1 (WCH1) AREA
DP4	TEMPORARY ENHANCEMENT SHELFER (DP4 NOT TO BE IMPLEMENTED)
DP5	WAN CHAI EAST SEWAGE OUTFALL
DP6	DREDGING FOR THE CROSS-HARBOUR WATER MAINS

DP1 IS COVERED BY EP - 314/2008
 DP2 IS COVERED BY EP - 316/2008
 DP3, DP5 AND DP6 ARE COVERED BY EP - 356/2005

WORKS CONTRACT	DESIGNATED PROJECTS INVOLVED	CONSTRUCTION COMMENCEMENT
CEDD CONTRACT NO. HK/2009/01	DP1, DP3, DP6	APRIL 2010
CEDD CONTRACT NO. HK/2009/02	DP1, DP3, DP6	APRIL 2010
CEDD CONTRACT 3	DP1, DP3	END 2011
CEDD CONTRACT 4	DP1, DP3	END 2012
CEDD CONTRACT 5	DP3	2015
HyO CONTRACT NO. HY/2009/11	DP3	18 MARCH 2010
HyO CONTRACT NO. HY/2009/15	DP1, DP3	SEPTEMBER 2010
HyO CONTRACT NO. HY/2009/18	DP1	OCTOBER 2010
HyO CONTRACT NO. HY/2009/19	DP1	NOVEMBER 2010
HyO CONTRACT 12	DP1, DP3	MID 2013

CEODD 土木工程發展局
Civil Engineering and Development Department

WAN CHAI DEVELOPMENT PHASE II

WAN CHAI DEVELOPMENT PHASE II, PWD CENTRAL - WAN CHAI BYPASS - CANAL, FLOOD PREVENTION AND TESTING WORKS (STAGE 1)

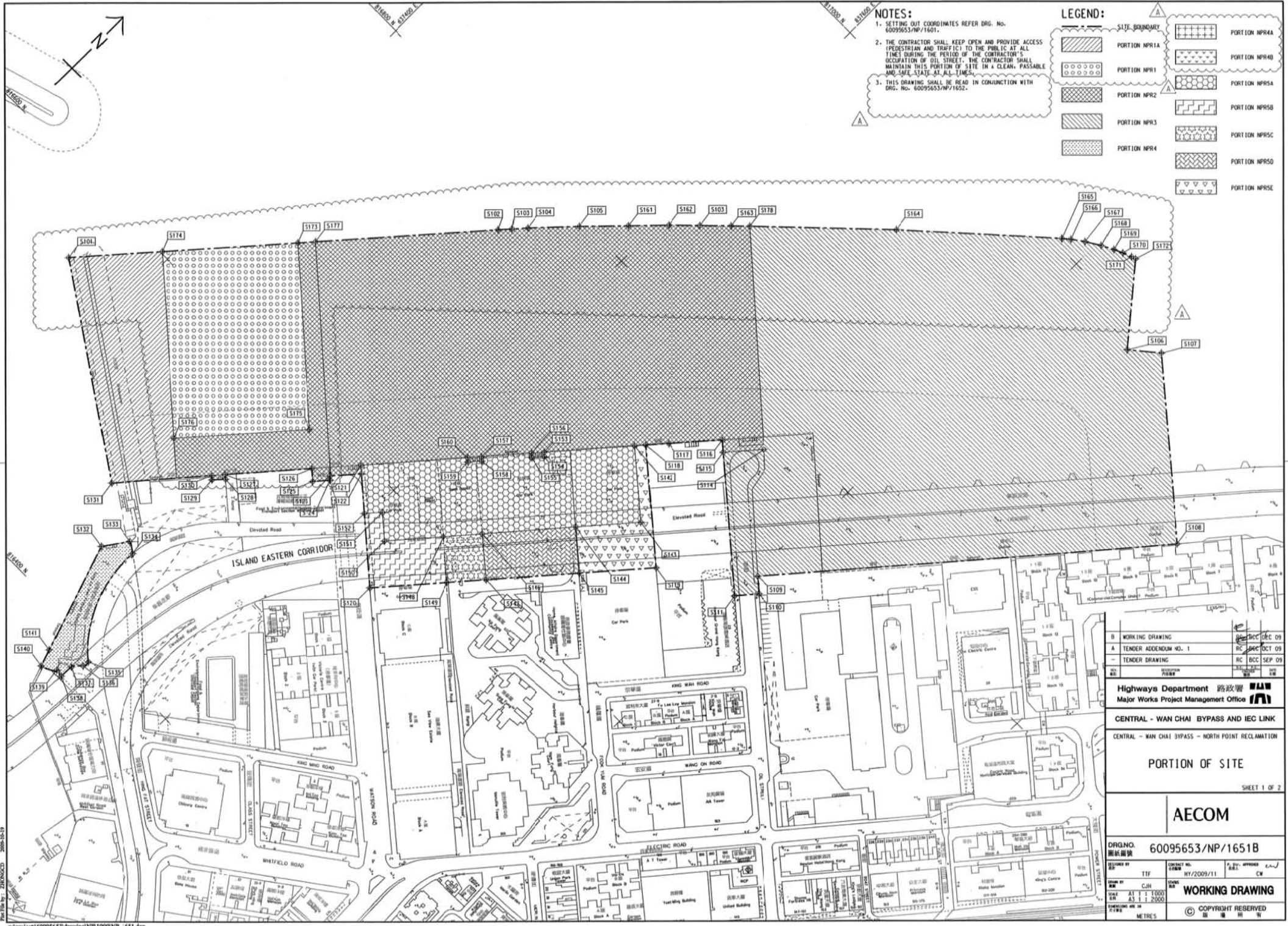
LOCATIONS OF WATER QUALITY MONITORING STATIONS

AECOM

PROJECT NUMBER: **60041297/C5/SK001**

DESIGNED BY: AEC	CHECKED BY: AEC	DATE: 1/1/2008
SCALE: 1:10000	DATE: 1/1/2008	SCALE: 1:10000

© COPYRIGHT RESERVED



NOTES:

1. SETTING OUT COORDINATES REFER DRG. No. 60095653/NP/1601.
2. THE CONTRACTOR SHALL KEEP OPEN AND PROVIDE ACCESS (PEDESTRIAN AND TRAFFIC) TO THE PUBLIC AT ALL TIMES DURING THE PERIOD OF THE CONTRACTOR'S OCCUPATION OF OIL STREET. THE CONTRACTOR SHALL MAINTAIN THIS PORTION OF SITE IN A CLEAN, PASSABLE AND SAFE STATE AT ALL TIMES.
3. THIS DRAWING SHALL BE READ IN CONJUNCTION WITH DRG. No. 60095653/NP/1652.

LEGEND:

[Dotted pattern]	PORTION NPR1	[Cross-hatch pattern]	PORTION NPR4
[Diagonal lines /]	PORTION NPR2	[Diagonal lines \]	PORTION NPR5
[Diagonal lines /]	PORTION NPR3	[Diagonal lines \]	PORTION NPR6
[Diagonal lines /]	PORTION NPR4	[Diagonal lines \]	PORTION NPR7
[Diagonal lines /]	PORTION NPR5	[Diagonal lines \]	PORTION NPR8
[Diagonal lines /]	PORTION NPR6	[Diagonal lines \]	PORTION NPR9
[Diagonal lines /]	PORTION NPR7	[Diagonal lines \]	PORTION NPR10
[Diagonal lines /]	PORTION NPR8	[Diagonal lines \]	PORTION NPR11
[Diagonal lines /]	PORTION NPR9	[Diagonal lines \]	PORTION NPR12
[Diagonal lines /]	PORTION NPR10	[Diagonal lines \]	PORTION NPR13
[Diagonal lines /]	PORTION NPR11	[Diagonal lines \]	PORTION NPR14
[Diagonal lines /]	PORTION NPR12	[Diagonal lines \]	PORTION NPR15
[Diagonal lines /]	PORTION NPR13	[Diagonal lines \]	PORTION NPR16
[Diagonal lines /]	PORTION NPR14	[Diagonal lines \]	PORTION NPR17
[Diagonal lines /]	PORTION NPR15	[Diagonal lines \]	PORTION NPR18
[Diagonal lines /]	PORTION NPR16	[Diagonal lines \]	PORTION NPR19
[Diagonal lines /]	PORTION NPR17	[Diagonal lines \]	PORTION NPR20
[Diagonal lines /]	PORTION NPR18	[Diagonal lines \]	PORTION NPR21
[Diagonal lines /]	PORTION NPR19	[Diagonal lines \]	PORTION NPR22
[Diagonal lines /]	PORTION NPR20	[Diagonal lines \]	PORTION NPR23
[Diagonal lines /]	PORTION NPR21	[Diagonal lines \]	PORTION NPR24
[Diagonal lines /]	PORTION NPR22	[Diagonal lines \]	PORTION NPR25
[Diagonal lines /]	PORTION NPR23	[Diagonal lines \]	PORTION NPR26
[Diagonal lines /]	PORTION NPR24	[Diagonal lines \]	PORTION NPR27
[Diagonal lines /]	PORTION NPR25	[Diagonal lines \]	PORTION NPR28
[Diagonal lines /]	PORTION NPR26	[Diagonal lines \]	PORTION NPR29
[Diagonal lines /]	PORTION NPR27	[Diagonal lines \]	PORTION NPR30
[Diagonal lines /]	PORTION NPR28	[Diagonal lines \]	PORTION NPR31
[Diagonal lines /]	PORTION NPR29	[Diagonal lines \]	PORTION NPR32
[Diagonal lines /]	PORTION NPR30	[Diagonal lines \]	PORTION NPR33
[Diagonal lines /]	PORTION NPR31	[Diagonal lines \]	PORTION NPR34
[Diagonal lines /]	PORTION NPR32	[Diagonal lines \]	PORTION NPR35
[Diagonal lines /]	PORTION NPR33	[Diagonal lines \]	PORTION NPR36
[Diagonal lines /]	PORTION NPR34	[Diagonal lines \]	PORTION NPR37
[Diagonal lines /]	PORTION NPR35	[Diagonal lines \]	PORTION NPR38
[Diagonal lines /]	PORTION NPR36	[Diagonal lines \]	PORTION NPR39
[Diagonal lines /]	PORTION NPR37	[Diagonal lines \]	PORTION NPR40
[Diagonal lines /]	PORTION NPR38	[Diagonal lines \]	PORTION NPR41
[Diagonal lines /]	PORTION NPR39	[Diagonal lines \]	PORTION NPR42
[Diagonal lines /]	PORTION NPR40	[Diagonal lines \]	PORTION NPR43
[Diagonal lines /]	PORTION NPR41	[Diagonal lines \]	PORTION NPR44
[Diagonal lines /]	PORTION NPR42	[Diagonal lines \]	PORTION NPR45
[Diagonal lines /]	PORTION NPR43	[Diagonal lines \]	PORTION NPR46
[Diagonal lines /]	PORTION NPR44	[Diagonal lines \]	PORTION NPR47
[Diagonal lines /]	PORTION NPR45	[Diagonal lines \]	PORTION NPR48
[Diagonal lines /]	PORTION NPR46	[Diagonal lines \]	PORTION NPR49
[Diagonal lines /]	PORTION NPR47	[Diagonal lines \]	PORTION NPR50
[Diagonal lines /]	PORTION NPR48	[Diagonal lines \]	PORTION NPR51
[Diagonal lines /]	PORTION NPR49	[Diagonal lines \]	PORTION NPR52
[Diagonal lines /]	PORTION NPR50	[Diagonal lines \]	PORTION NPR53
[Diagonal lines /]	PORTION NPR51	[Diagonal lines \]	PORTION NPR54
[Diagonal lines /]	PORTION NPR52	[Diagonal lines \]	PORTION NPR55
[Diagonal lines /]	PORTION NPR53	[Diagonal lines \]	PORTION NPR56
[Diagonal lines /]	PORTION NPR54	[Diagonal lines \]	PORTION NPR57
[Diagonal lines /]	PORTION NPR55	[Diagonal lines \]	PORTION NPR58
[Diagonal lines /]	PORTION NPR56	[Diagonal lines \]	PORTION NPR59
[Diagonal lines /]	PORTION NPR57	[Diagonal lines \]	PORTION NPR60
[Diagonal lines /]	PORTION NPR58	[Diagonal lines \]	PORTION NPR61
[Diagonal lines /]	PORTION NPR59	[Diagonal lines \]	PORTION NPR62
[Diagonal lines /]	PORTION NPR60	[Diagonal lines \]	PORTION NPR63
[Diagonal lines /]	PORTION NPR61	[Diagonal lines \]	PORTION NPR64
[Diagonal lines /]	PORTION NPR62	[Diagonal lines \]	PORTION NPR65
[Diagonal lines /]	PORTION NPR63	[Diagonal lines \]	PORTION NPR66
[Diagonal lines /]	PORTION NPR64	[Diagonal lines \]	PORTION NPR67
[Diagonal lines /]	PORTION NPR65	[Diagonal lines \]	PORTION NPR68
[Diagonal lines /]	PORTION NPR66	[Diagonal lines \]	PORTION NPR69
[Diagonal lines /]	PORTION NPR67	[Diagonal lines \]	PORTION NPR70
[Diagonal lines /]	PORTION NPR68	[Diagonal lines \]	PORTION NPR71
[Diagonal lines /]	PORTION NPR69	[Diagonal lines \]	PORTION NPR72
[Diagonal lines /]	PORTION NPR70	[Diagonal lines \]	PORTION NPR73
[Diagonal lines /]	PORTION NPR71	[Diagonal lines \]	PORTION NPR74
[Diagonal lines /]	PORTION NPR72	[Diagonal lines \]	PORTION NPR75
[Diagonal lines /]	PORTION NPR73	[Diagonal lines \]	PORTION NPR76
[Diagonal lines /]	PORTION NPR74	[Diagonal lines \]	PORTION NPR77
[Diagonal lines /]	PORTION NPR75	[Diagonal lines \]	PORTION NPR78
[Diagonal lines /]	PORTION NPR76	[Diagonal lines \]	PORTION NPR79
[Diagonal lines /]	PORTION NPR77	[Diagonal lines \]	PORTION NPR80
[Diagonal lines /]	PORTION NPR78	[Diagonal lines \]	PORTION NPR81
[Diagonal lines /]	PORTION NPR79	[Diagonal lines \]	PORTION NPR82
[Diagonal lines /]	PORTION NPR80	[Diagonal lines \]	PORTION NPR83
[Diagonal lines /]	PORTION NPR81	[Diagonal lines \]	PORTION NPR84
[Diagonal lines /]	PORTION NPR82	[Diagonal lines \]	PORTION NPR85
[Diagonal lines /]	PORTION NPR83	[Diagonal lines \]	PORTION NPR86
[Diagonal lines /]	PORTION NPR84	[Diagonal lines \]	PORTION NPR87
[Diagonal lines /]	PORTION NPR85	[Diagonal lines \]	PORTION NPR88
[Diagonal lines /]	PORTION NPR86	[Diagonal lines \]	PORTION NPR89
[Diagonal lines /]	PORTION NPR87	[Diagonal lines \]	PORTION NPR90
[Diagonal lines /]	PORTION NPR88	[Diagonal lines \]	PORTION NPR91
[Diagonal lines /]	PORTION NPR89	[Diagonal lines \]	PORTION NPR92
[Diagonal lines /]	PORTION NPR90	[Diagonal lines \]	PORTION NPR93
[Diagonal lines /]	PORTION NPR91	[Diagonal lines \]	PORTION NPR94
[Diagonal lines /]	PORTION NPR92	[Diagonal lines \]	PORTION NPR95
[Diagonal lines /]	PORTION NPR93	[Diagonal lines \]	PORTION NPR96
[Diagonal lines /]	PORTION NPR94	[Diagonal lines \]	PORTION NPR97
[Diagonal lines /]	PORTION NPR95	[Diagonal lines \]	PORTION NPR98
[Diagonal lines /]	PORTION NPR96	[Diagonal lines \]	PORTION NPR99
[Diagonal lines /]	PORTION NPR97	[Diagonal lines \]	PORTION NPR100

B	WORKING DRAWING	09 DEC 09
A	TENDER ADDENDUM NO. 1	09 OCT 09
-	TENDER DRAWING	09 SEP 09

Highways Department 路政署
Major Works Project Management Office

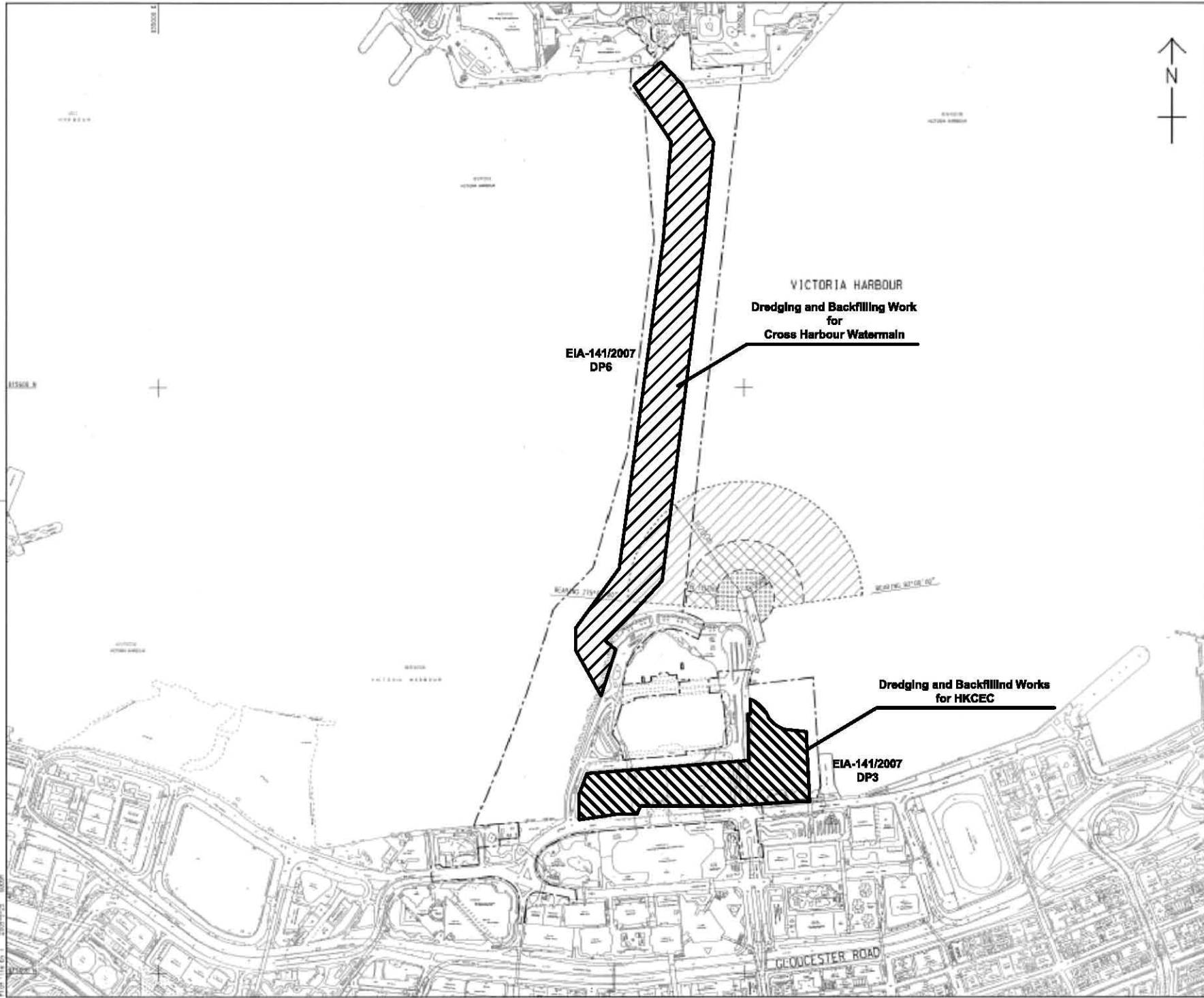
CENTRAL - WAN CHAI BYPASS AND IEC LINK
CENTRAL - WAN CHAI BYPASS - NORTH POINT RECLAMATION

PORTION OF SITE
SHEET 1 OF 2

AECOM

DRGNO.	60095653/NP/1651B
DESIGNED BY	TTF
CHECKED BY	CJH
DATE	11/2/2009
SCALE	AS SHOWN
UNIT	METRES

WORKING DRAWING
COPYRIGHT RESERVED



LOCATION PLAN
SCALE 1 : 5000

- NOTES:
1. ALL DIMENSIONS ARE IN METRES UNLESS OTHERWISE NOTED.
 2. THE RESTRICTION ZONE IS THIS DRAWING WILL COME INTO EFFECT AFTER THE OPERATION OF THE GOVERNMENT HULLING AT EDP/D/D/E LAST.

LEGEND:

- CONTRACT BOUNDARY
- [Diagonal Hatching] WORKING RESTRICTION ZONE
- [Cross Hatching] NAVIGATION AND WORKING RESTRICTION ZONE
- [Grid Hatching] WORKING BARGE, NAVIGATION AND WORKING RESTRICTION ZONE

TENDER ADDENDUM NO. 4	SEP 25, 2009
TENDER ADDENDUM NO. 1	SEP 25, 2009
TENDER DRAWING	SEP 25, 2009

CEDD 土木工程發展署
Civil Engineering and Development Department

WAN CHAI DEVELOPMENT PHASE II

WAN CHAI DEVELOPMENT PHASE II -
KONG KONG CONVENTION AND EXHIBITION CENTRE
**RESTRICTED ZONE FOR
CONSTRUCTION VESSELS**
(Contract no: HK/2009/01)

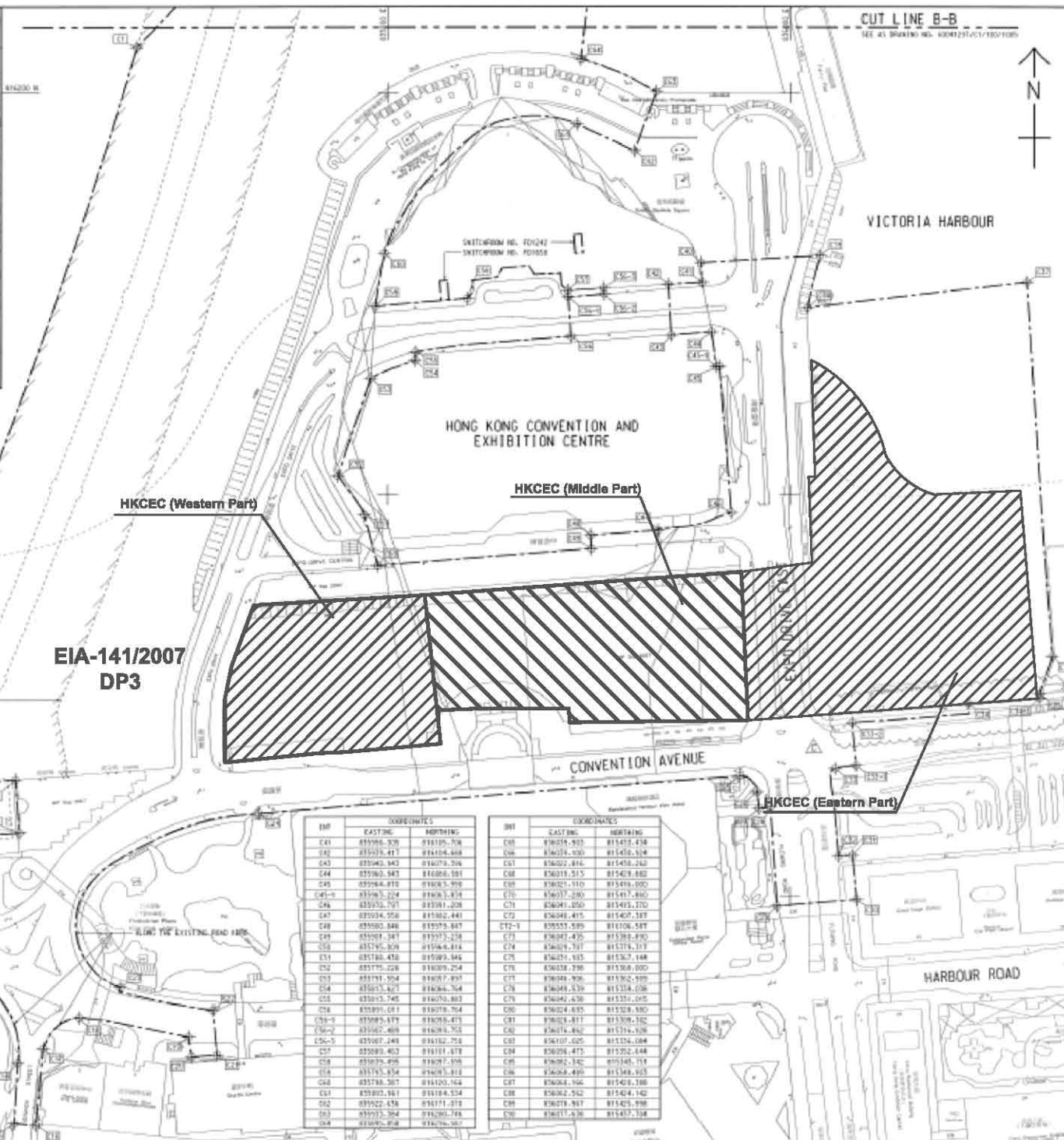
AECOM

DRGNO. 60041297/C1/100/10108	DATE 16/2009/01	SCALE AS 1:5000
DESIGNER	CHECKER	DATE
DATE	DATE	DATE



INSET 'A'
SCALE 1:1000

CENTRAL DISTRICT



EIA-141/2007
DP3

HKCEC (Western Part)

HKCEC (Middle Part)

HKCEC (Eastern Part)

INT	COORDINATES	
	EASTING	NORTHING
C41	835986.528	818105.708
C42	835979.417	818104.468
C43	835963.943	818079.706
C44	835963.543	818086.581
C45	835964.818	818085.528
C46	835965.504	818085.514
C46	835955.757	818081.208
C47	835954.956	818082.441
C48	835960.846	818075.887
C49	835961.347	818073.238
C50	835956.828	818066.814
C51	835948.478	818080.846
C52	835975.226	818089.224
C53	835971.504	818077.897
C54	835975.827	818084.764
C55	835973.745	818079.883
C56	835991.071	818078.764
C56-1	835995.679	818078.873
C56-2	835982.468	818078.765
C56-3	835987.248	818182.758
C57	835983.463	818181.878
C58	835978.496	818077.198
C59	835978.574	818081.818
C60	835978.507	818120.164
C61	835990.881	818184.524
C62	835923.434	818171.812
C63	835923.504	818280.788
C64	835925.818	818276.307

INT	COORDINATES	
	EASTING	NORTHING
C65	836028.933	818413.438
C66	836034.000	818413.614
C67	836022.816	818413.240
C68	836019.515	818413.882
C69	836021.110	818414.000
C70	836027.289	818413.880
C71	836041.050	818413.270
C72	836048.415	818407.187
C72-1	835555.589	818106.587
C73	836047.435	818385.890
C74	836049.797	818374.107
C75	836024.185	818382.148
C76	836038.298	818388.000
C77	836048.906	818382.898
C78	836048.439	818374.038
C79	836042.630	818351.015
C80	836024.635	818328.880
C81	836028.417	818308.182
C82	836028.882	818378.148
C83	836107.025	818326.084
C84	836098.473	818322.444
C85	836092.342	818348.714
C86	836084.499	818348.925
C87	836084.196	818348.388
C88	836082.512	818348.142
C89	836078.987	818345.898
C90	836077.630	818347.198

CUT LINE B-B
SEE AT DRAWING NO. A00025/C1/100/1006



KEY PLAN
SCALE 1:10000

NOTE:
1. FOR NOTES & LEGEND, REFER TO DRAWING NO. A00025/C1/100/1006.

INT	COORDINATES	
	EASTING	NORTHING
C1	836075.205	818222.551
C2	836075.207	818222.599
C3	836074.561	818224.425
C4	836071.020	818231.014
C5	836082.492	818229.522
C6	836081.584	818218.612
C7	836086.585	818215.197
C8	836086.191	818217.147
C9	836086.433	818232.241
C10	836081.082	818207.050
C11	836085.389	818208.075
C12	836071.486	818208.107
C13	836025.468	818204.817
C14	836086.433	818217.122
C15	836074.285	818208.500
C16	836075.195	818205.525
C17	836086.191	818204.441
C18	836046.085	818208.816
C19	836181.421	818250.587
C20	836202.537	818220.881
C21	836215.285	818271.484
C22	836213.182	818242.543
C23	836027.086	818208.074
C24	836226.984	818283.670
C25	836215.280	818280.251
C26	836081.447	818212.286
C27	836084.025	818243.896
C28	836076.218	818244.445
C29	836091.525	818270.180
C30	836083.781	818208.447
C31	836031.216	818228.470
C32	836024.142	818225.117
C33	836021.081	818205.482
C34	836026.290	818204.700
C35	836027.428	818205.256
C36	836008.187	818204.280
C37	836024.812	818208.080
C38	836024.747	818208.285
C39	836028.850	818219.194
C40	836018.190	818208.037
C41	836028.810	818207.285
C42	836018.906	818208.080
C43	836025.682	818215.512

C	TENDER ADDENDUM NO.4	SHEN JYL DEP C8
B	TENDER ADDENDUM NO.2	SHEN JYL DEP C8
A	TENDER ADDENDUM NO.1	SHEN JYL DEP C8
-	TENDER DRAWING	SHEN JYL DEP C8
20	2009	SEP 08

土木工程師學會
Civil Engineering and
Development Department

WAN CHAI DEVELOPMENT PHASE II

WAN CHAI DEVELOPMENT PHASE II -
CONTRACT NO. HK/2009/01
HONG KONG CONVENTION AND EXHIBITION CENTRE

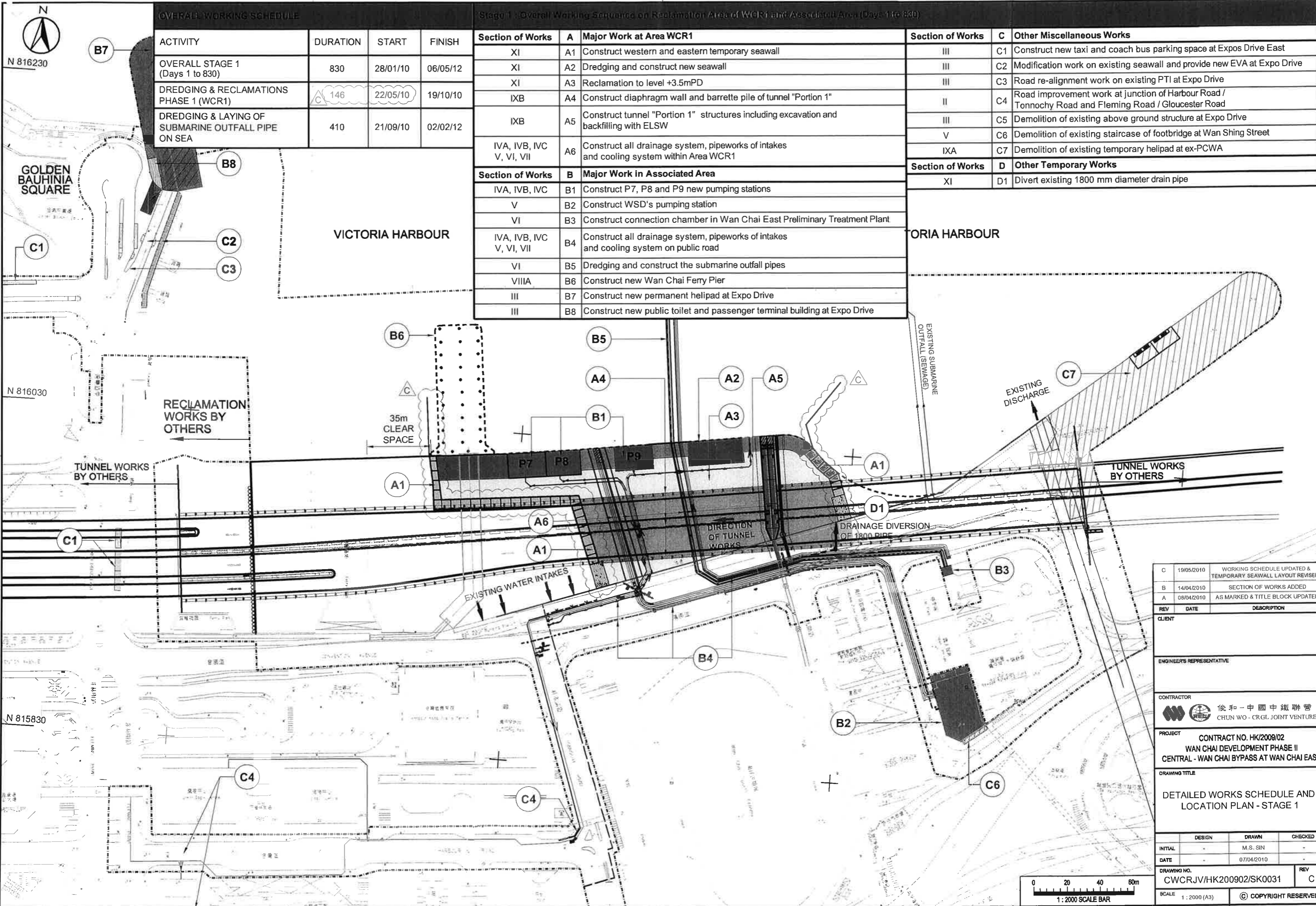
SITE BOUNDARY
SETTING OUT PLAN
(Contract no. Hk/2009/01)

AECOM

DRGNO.
圖號
60041297/C1/100/1006C

SCALE	1:1000	DATE	2009/01	BY	PMC
DESIGNED BY	NS1	CHECKED BY	NS1	DATE	2009/01
DRAWN BY	NS1	DATE	2009/01	BY	PMC
SCALE	AS 1:2000	DATE	2009/01	BY	PMC

© COPYRIGHT RESERVED



OVERALL WORKING SCHEDULE

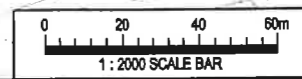
ACTIVITY	DURATION	START	FINISH
OVERALL STAGE 1 (Days 1 to 830)	830	28/01/10	06/05/12
DREDGING & RECLAMATIONS PHASE 1 (WCR1)	146	22/05/10	19/10/10
DREDGING & LAYING OF SUBMARINE OUTFALL PIPE ON SEA	410	21/09/10	02/02/12

Stage 1: Overall Working Sequence on Reclamation Area of WCR1 and Associated Area (Days 1 to 830)

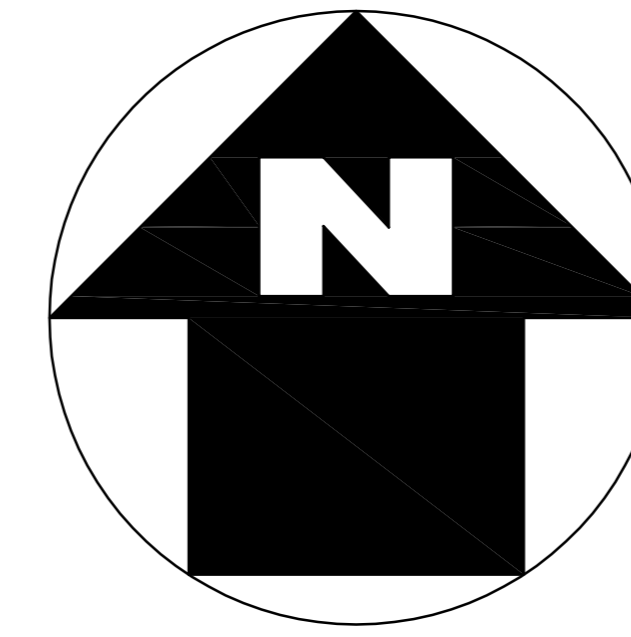
Section of Works	A	Major Work at Area WCR1	Section of Works	C	Other Miscellaneous Works
XI	A1	Construct western and eastern temporary seawall	III	C1	Construct new taxi and coach bus parking space at Expos Drive East
XI	A2	Dredging and construct new seawall	III	C2	Modification work on existing seawall and provide new EVA at Expo Drive
XI	A3	Reclamation to level +3.5mPD	III	C3	Road re-alignment work on existing PTI at Expo Drive
IXB	A4	Construct diaphragm wall and barrette pile of tunnel "Portion 1"	II	C4	Road improvement work at junction of Harbour Road / Tonnochy Road and Fleming Road / Gloucester Road
IXB	A5	Construct tunnel "Portion 1" structures including excavation and backfilling with ELSW	III	C5	Demolition of existing above ground structure at Expo Drive
IVA, IVB, IVC, V, VI, VII	A6	Construct all drainage system, pipeworks of intakes and cooling system within Area WCR1	V	C6	Demolition of existing staircase of footbridge at Wan Shing Street
			IXA	C7	Demolition of existing temporary helipad at ex-PCWA
Section of Works	B	Major Work in Associated Area	Section of Works	D	Other Temporary Works
IVA, IVB, IVC	B1	Construct P7, P8 and P9 new pumping stations	XI	D1	Divert existing 1800 mm diameter drain pipe
V	B2	Construct WSD's pumping station			
VI	B3	Construct connection chamber in Wan Chai East Preliminary Treatment Plant			
IVA, IVB, IVC, V, VI, VII	B4	Construct all drainage system, pipeworks of intakes and cooling system on public road			
VI	B5	Dredging and construct the submarine outfall pipes			
VIIIA	B6	Construct new Wan Chai Ferry Pier			
III	B7	Construct new permanent helipad at Expo Drive			
III	B8	Construct new public toilet and passenger terminal building at Expo Drive			

REV	DATE	DESCRIPTION
C	19/05/2010	WORKING SCHEDULE UPDATED & TEMPORARY SEAWALL LAYOUT REVISED
B	14/04/2010	SECTION OF WORKS ADDED
A	08/04/2010	AS MARKED & TITLE BLOCK UPDATED

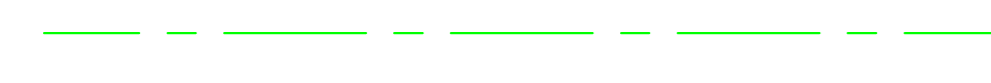
CLIENT		
ENGINEER'S REPRESENTATIVE		
CONTRACTOR 俊和-中國中鐵聯營 CHUN WO - CRGL JOINT VENTURE		
PROJECT CONTRACT NO. HK/2009/02 WAN CHAI DEVELOPMENT PHASE II CENTRAL - WAN CHAI BYPASS AT WAN CHAI EAST		
DRAWING TITLE DETAILED WORKS SCHEDULE AND LOCATION PLAN - STAGE 1		
DESIGN	DRAWN	CHECKED
INITIAL	M.S. SIN	
DATE	07/04/2010	REV
DRAWING NO.	CWCRJV/HK200902/SK0031	REV
SCALE	1:2000 (A3)	C
© COPYRIGHT RESERVED		



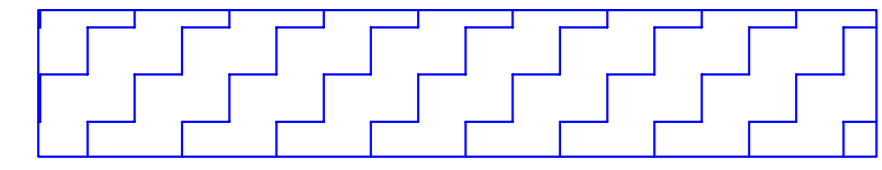
港口
HARBOUR



LEGEND:



WORKS AREA



DREDGING AREA FOR
MITIGATION OF ODOUR(DP3)



SITE BOUNDARY

TCBR1E

TCBR2
AND
TCBR3

銅鑼灣避風塘
CAUSEWAY BAY TYPHOON SHELTER

TCBR4

TCBR1W

貨物裝卸灣
Cargo Handling Basin
TPCWAW

TPCWAE

DP3

中國建築工程(香港)有限公司
CHINA STATE CONSTRUCTION ENGR. (HONG KONG) LTD.

Highways Department
CONTRACT NO. HY/2009/15
CENTRAL-WAN CHAI BYPASS -TUNNEL
(CAUSEWAY BAY TYPHOON
SHELTER SECTION)

TITLE
LOCATION PLAN OF WORKS AREA

DRG. NO.
CWBT/EPD/001B

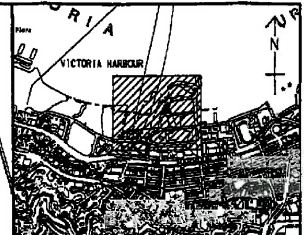
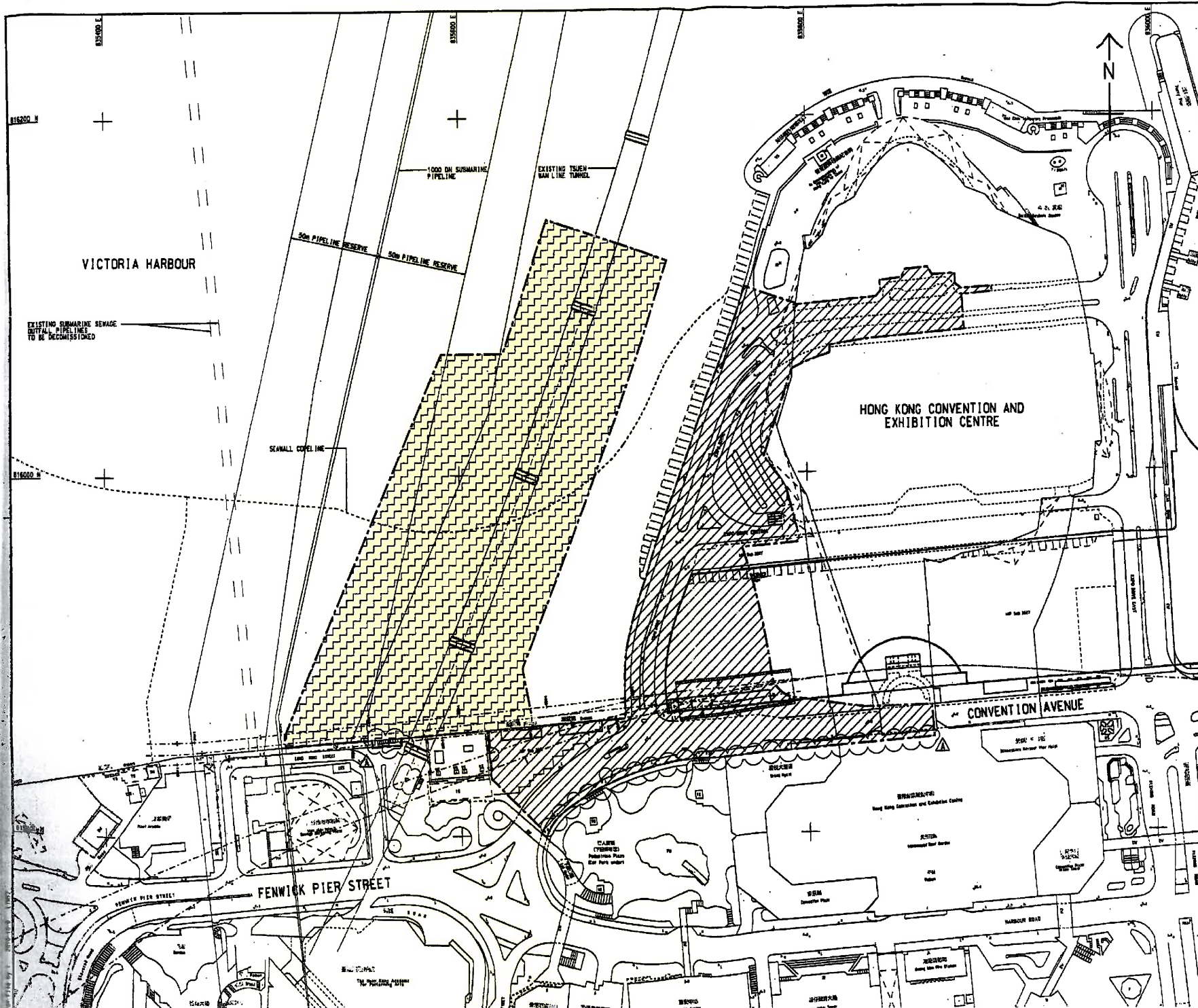
SCALE
1:1000 @ A0

STATUS

DIMENSIONS ARE IN
MILLIMETERS

COPYRIGHT RESERVED

維多利亞公園
Victoria Park



KEY PLAN
SCALE 1 : 20000

- NOTES:**
- COORDINATES ARE BASED ON HONG KONG METRIC GRID (1980) UNLESS OTHERWISE NOTED.
 - LEVELS ARE IN METRES RELATIVE TO HONG KONG PRINCIPAL DATUM (1985) UNLESS OTHERWISE NOTED.
 - DIMENSIONS ARE IN MILLIMETERS UNLESS OTHERWISE NOTED.
 - SETTING OUT DIMENSIONS, LEVELS, COORDINATES ARE TO BE CALCULATED BY THE CONTRACTOR. NO INFORMATION SHOULD BE SCALED PHYSICALLY OR ELECTRICALLY FROM THE DRAWINGS OR FILES.
 - SITE BOUNDARY SETTING OUT POINTS SHALL REFER TO DRAWING NO. 60041297/C4/100/1201.

LEGEND:

- SITE BOUNDARY
- PORTION 1
- PORTION 2 (DELAY POSSESSION)

TENDER ADDENDUM NO.1	SHW JYL OCT 10
TENDER DRAWING	SHW JYL SEP 10

CDP 土木工務發展局
Civil Engineering and Development Department

WAN CHAI DEVELOPMENT PHASE II
WAN CHAI DEVELOPMENT PHASE II - CENTRAL-WAN CHAI BYPASS OVER MTR TSUEN WAN L. LINE

PORTIONS OF THE SITE
(Contract HK/2010/06)

AECOM

DRAWING NO. 60041297/C4/100/1301A

DESIGNED BY SHW	CHECKED BY TRR
DATE 16/2010/06	DATE
SCALE A1 1:11000	

© COPYRIGHT RESERVED